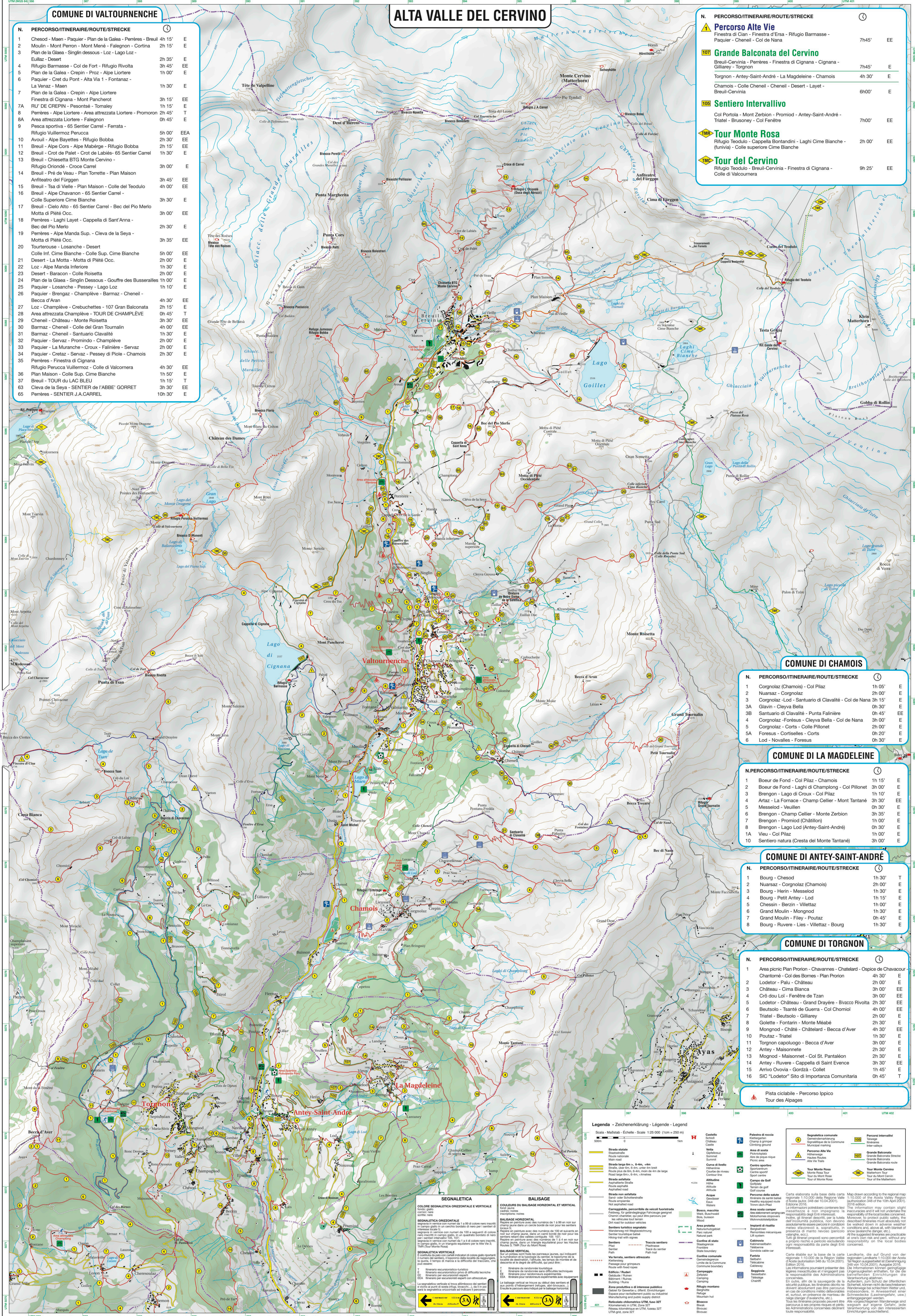


ALTA VALLE DEL CERVINO

COMUNE DI VALTOURNENCHE

Table with 3 columns: N. (Number), PERCORSO/ITINERAIRE/ROUTE/STRECKE (Route Name), and Time/Direction. Lists 65 routes for Valtournenche.

Table with 3 columns: N. (Number), PERCORSO/ITINERAIRE/ROUTE/STRECKE (Route Name), and Time/Direction. Lists routes for Alto Valle del Cervino.



COMUNE DI CHAMOIS

Table with 3 columns: N. (Number), PERCORSO/ITINERAIRE/ROUTE/STRECKE (Route Name), and Time/Direction. Lists 6 routes for Chamois.

COMUNE DI LA MAGDELINE

Table with 3 columns: N. (Number), PERCORSO/ITINERAIRE/ROUTE/STRECKE (Route Name), and Time/Direction. Lists 10 routes for La Magdeleine.

COMUNE DI ANTEY-SAINT-ANDRÉ

Table with 3 columns: N. (Number), PERCORSO/ITINERAIRE/ROUTE/STRECKE (Route Name), and Time/Direction. Lists 8 routes for Antey-Saint-André.

COMUNE DI TORGNON

Table with 3 columns: N. (Number), PERCORSO/ITINERAIRE/ROUTE/STRECKE (Route Name), and Time/Direction. Lists 16 routes for Torgnon.

Legenda - Zeichenklärung - Légende - Legend

Legend section containing symbols and text for various geographical features, roads, and administrative boundaries in Italian, French, and German.